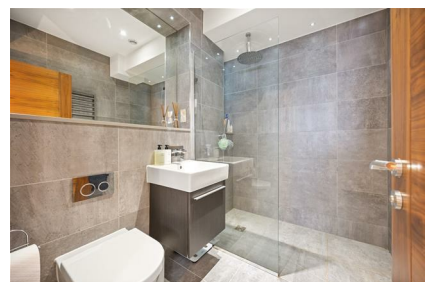


Parkheath

Sold on Service

Madoc Close NW2

£3,000 PCM (£692 per week) - Barnet Band F



Modern private gated development

1097 Sq Ft / 101.91 Sq M

Ground floor with access to small private garden

Semi open plan fitted kitchen

Conveniently situated between Hampstead and Golders Green

Allocated parking for 1 car

Excellent 2 double bedroom apartment

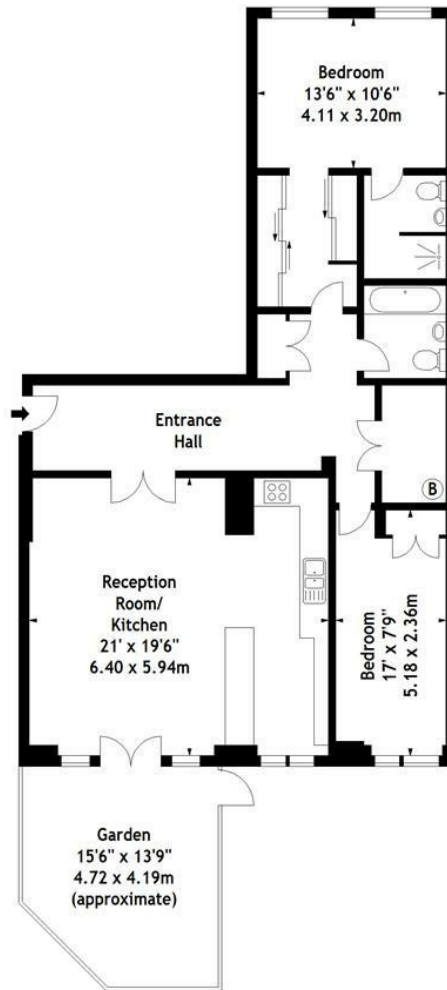
21' reception/dining room with wood flooring

Family bathroom and en suite shower room

EPC: Rating B, Council Tax: Barnet band F

West Hampstead Office 020 7794 7111

Madoc Close,
Tudor House, NW2
Approx. Gross Internal Area
1097 Sq Ft - 101.91 SqM



Ground Floor

Measured in accordance with RICS guidelines. Every attempt is made to ensure accuracy, however all measurements are approximate. This floor plan is for illustrative purposes only and is not to scale.
© Datagraphy Ltd 2016
Photographs * Floorplans * Virtual Tours
Tel: 0845 643 4401 www.datagraphy.com

The particulars do not constitute part of an offer or contract. The particulars, including text, photographs and plans, are for the guidance only of prospective purchasers/tenants and must not be relied upon as statements of fact. The descriptions provided therein represent the opinion of the author and whilst given in good faith should not be construed as statements of fact. Nothing in these particulars shall be deemed a statement that the property is in good condition or otherwise or that any services or facilities are in good working order. All measurements are approximate